

Model: Autoclave-drum - Supply Cylinder

Supply Cylinders are available in different sizes according to port size or preferred transfer options.

Our standard drum is approx 18"(45cm) in diameter, 82cm long with large perforations to allow good steam penetration.

Available with or without shelves. The shelves are manufactured from aluminium with specially angled runners to avoid accidental damage and to ensure easy handling.

To close the cylinder there is the option to use standard Mylar-flim or an autoclavable cap made of Viton or Silikon. To use the cap more easily we recommend the additional collar on the drum to allow enough room to open and close the clamp assembly.

In order to make the set complete we also offer autoclave trolleys compatible to both Isolator and cylinder.

AD-NKP-S: Standard NKP drum without shelves

AD-NKP-6: Standard NKP drum with 6 full lenght shelves

AD-NKP-LC: NKP drum with collar - without shelves

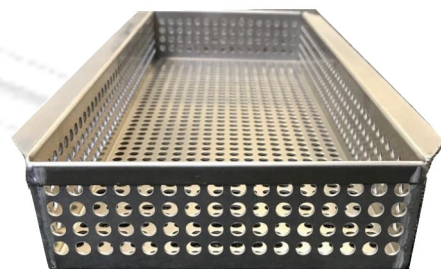
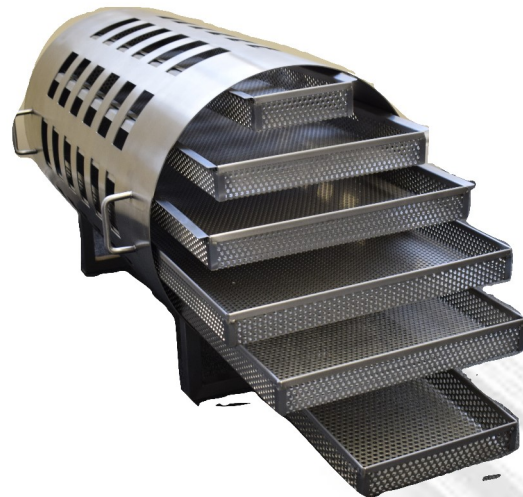
AD-NKP-LC-6: NKP drum with collar and 6 fulll lenght shelves

Dimensions:

Overall: 82cm(L) x 46cm(W) x 60cm (H)

Shelves: 6x 4cm height at different width ranging from 15cm to 43

Optional are half length shelving



Filter Material:

The drum is wrapped in 3 layers of high Quality DW4 Filter material to ensure sterile equipment after steam sterilisation. The low dust emission of this filter material makes it especially easy to use. Replacement filters are available in sheets to cover each drum or in complete rolls.

